

# Wireless Security Camera System Instructions for use

## Contents [ hide ]

- 1 Safety Caution
- 2 Nvr product description
- 3 IP Cameras product description
- 4 Installation Instruction of WIFI NVR KIT
- 5 Setup The System
  - 5.1 CHECK NVR NETWORK , CHANGE NVR SYSTEM LOGIN PASSWORD
  - 5.2 How to check if your Cloud is online and Network status is healthy ?
- 6 Menu Do What
  - 6.1 Menu bar
  - 6.2 System Setup
- 7 Menu Do What
- 8 Video Playback
- 9 How to Backup the video
- 10 View on PC via IE or Eseecloud and Phone APP Eseecloud or IP PRO
  - 10.1 To View on the the PC
  - 10.2 To view on Eseecloud software on PC
  - 10.3 To View on IE browser
  - 10.4 To view on the Phone
- 11 Playback On Mobiles
- 12 Extend WIFI Range
  - 12.1 Position The Antenna Correctly
  - 12.2 Use Antenna Extension Cord to prolong WIFI distance
  - 12.3 Set up cascading connection in a reasonable solution,extend wifi signal transfer distance
- 13 Repeater Setup
- 14 Delete Repeater
- 15 Application Example
- 16 IP pro (VR Cam, EseeCloud)

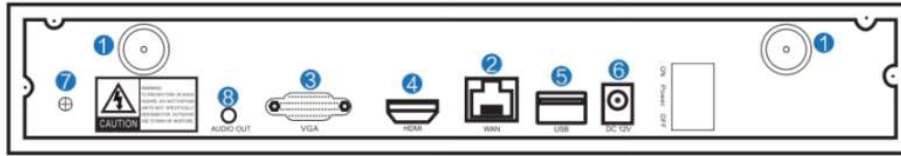
This tutorial is for NVR Wireless Security Camera System using IP PRO, EseeCloud (<https://ipproapp.com/faq/camera-add-failure-reasons-and-solutions>), vr cam

## Safety Caution

- Please do not put any fluid container on the product.
- Please use the product in ventilated environment and prevent blocking the vents.
- Please use included power supply with the product to prevent damage to the product.
- Please use the product under its standard working temperature and humidity.
- Dust on PCB may cause short circuit.It is suggested to clean the dust on PCB timely to make the product work properly.
- Please obey the regulation and policy in your country and area during the installation of this

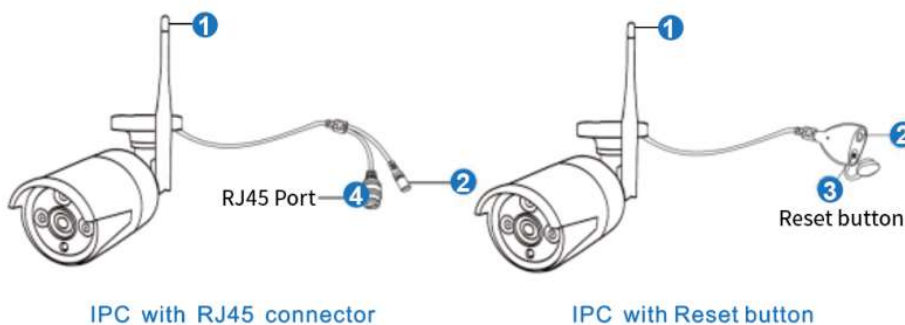
This product may require cabling,we suggest to test all products&parts before installation and cabling

## Nvr product description



1. WiFi Antenna Ports:Double antennas to WiFi range
2. WAN Port:Connect your NVR to Internet
3. VGA Port:For viewing on VGA monitor
4. HDMI Port:For viewing on HDTV
5. USB Ports:For mouse and backup
6. Power Input

## IP Cameras product description



- ①. WiFi antenna:WiFi connection with NVR;
- ②. DC Port:input power 12V 1A;
- ③. Reset Button:press reset button for 10 seconds to restore factory setting and enter into matching-code mode;
- ④. RJ45 Port:for pair the camera with NVR,or connect the camera by wired connection

Note:Working temperature ranging from -13 degrees Fahrenheit to 122 degrees Fahrenheit.

## Installation Instruction of WIFI NVR KIT



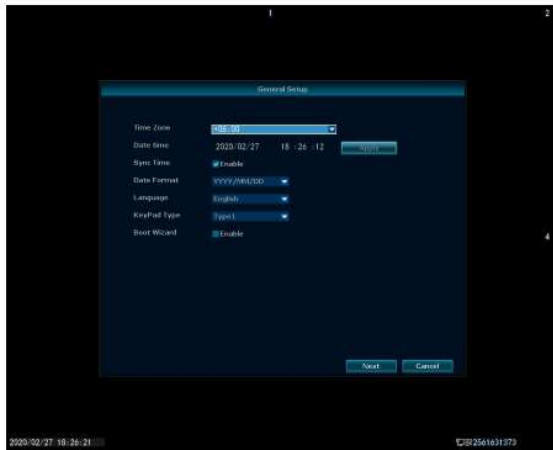
# Setup The System

This system is standalone with embedded Linux Operating System in the NVR. Just like a desktop PC, need to hook a screen to the NVR to enter the OS .Any TV,monitor with VGA or HDMI input should work for it.

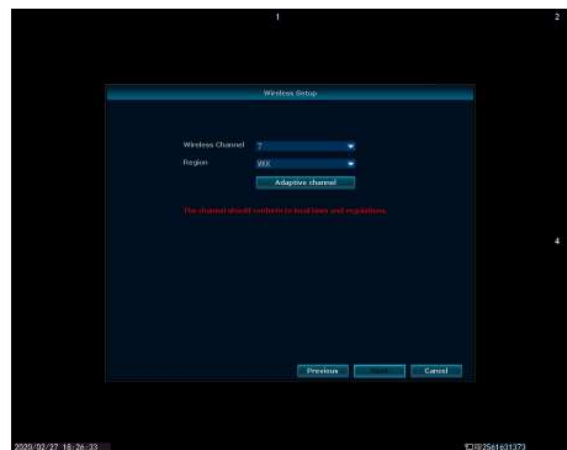
If you connect the NVR with monitor shows Hiseeu logo or shows black,normally it is your monitor resolution is lower then the NVR.You can press the left side of the mouse for 30s,then it will reboot.

If still can't work,pls change a monitor,thanks.

When you turn on the NVR box, the monitor will get below interface: Setup Wizard- -Down- -General setup- -Next -wireless setup- -Next- -Fast network- -Next -Format the hard drive- -Next



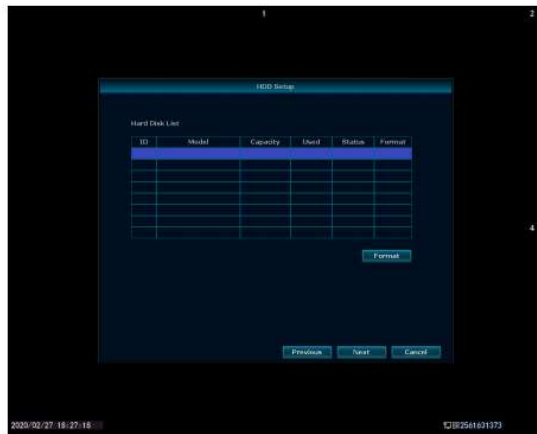
(1)



(2)



(3)



(4)

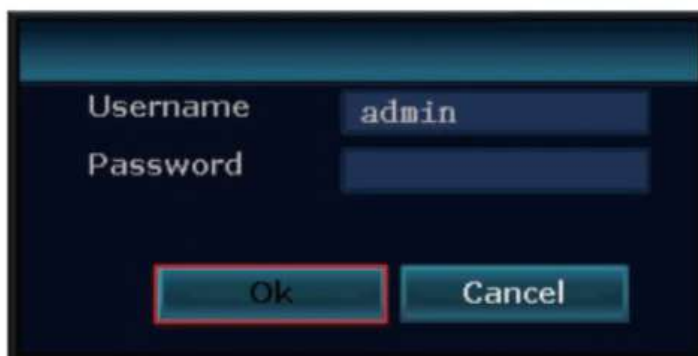


(5)

## CHECK NVR NETWORK , CHANGE NVR SYSTEM LOGIN PASSWORD

Once you have completed connecting the NVR, wait approximately 2-3 minutes. Next you will see the window below on your monitor screen. For your first time to login in, User name is admin, there is no password, just choose ok to get into the menu.

**(if you forget the password, pls find the solution on the FAQ page)**



Tips: To protect your privacy, please set your password at earliest convenience (don't set the password over 8 characters). Right click the mouse → System Setup → System Admin → User to set password.

General Setup   Record Setup   Network Setup   Channel Setup   **System Admin**

System Version  
System Log  
**User**  
System Upgrade  
Sys Maintenance  
Factory Setting

ID	UserName	Super user
1	admin	Yes
2		
3		
4		
5		
6		
7		
8		
9		
10		
11		
12		

Add User  
Delete User  
Edit User  
**Set Password**

Ok   Cancel

Username      admin

Old password      [ ]

**New password      \*\*\***

Repeated      [\*\*\*]

Password length (up to 12 characters)

**Ok**      Cancel

# How to check if your Cloud is online and Network status is healthy ?

Right click the mouse of the register,choose Fast Network.In the middle of the window you should see Cloud status as ONLINE and Network Status as Healthy Network.

If this does not appear, select Manual Config then enable DHCP,Click Apply,then power off the NVR box,wait a few seconds and power up.

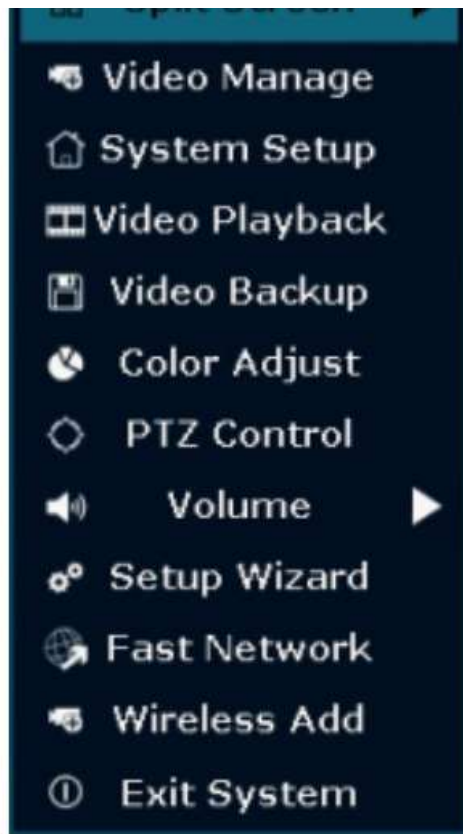


Once you power up, repeat the steps outlined as above.Cloud status must be ONLINE and Network Status must be Healthy Network.If this does not happen,you will not be able to view remotely

## Menu Do What

### Menu bar





**Split Screen:** change status of live view.You can choose to view multiple cameras or any single camera.

**Video Manage:** manage IP cameras and NVR channels.

**System Setup:** all system settings.

**Video Playback:** playback recorded videos.

**Video Backup:** backup recorded videos.

**Color Adjust:** adjust the image setting of the each camera

**PTZ Control:** control PTZ camera

**Volume:** Adjust volume of audio cameras(works only for audio cameras).

**Setup Wizard:** step by step guide of 1st time general settings.

**Fast Network:** shortcut to network settings.

**Wireless Add:** add IP cameras into NVR channels wirelessly.

**Exit System:** logout,reboot,close screen output and shut down the system.

## System Setup

Click right button→Choose System setup; enter the menu that enables you to do all settings related to this system.

- **General setup**(This enables you to set)  
Language,Display Resolution,Time,HDD informaion,Error
- **Network setup**(This enables you to set)  
All network related settings
- **Channel setup**(This enables you to set)  
Manage channels and cameras



- **System admin**(This enables you to set)  
System version,System maintenance including system upgrade,User and password management,Restore to default settings
- **Record setup**(This enables you to set)  
Record plan for each channel video,detection

## Menu Do What

There are 3 modes for record.

1. Time Recording: Setup period of time of recording on NVR GUI.Right click mouse→System Setup→Record setup→Record Plan.Click "time" and put mouse icon on the upper left corner(for example "1" as picture shows),press and drag the mouse to the right to choose the time.The list will turn to red.
2. Motion Recording: Only detect motion and then start recording.Right click mouse→System Setup→Record setup→Record Plan.Click "motion" and put mouse icon on the upper left corner,press and drag the mouse to the right to choose the time.The list will turn to green.
3. Alarm recording: Right click mouse→System Setup→Record setup→Record Plan.Click "Alarm" and put mouse icon on the upper left corner,press and drag the mouse to the right to choose the time.  
The list will turn to yellow.

Note: Users can setup any period of time they want,for example 0:00:00-23:59:59,That's 24 hours×7 days recording,When NVR detects hard disk,the default setting will be 24 hours×7 days recording.

The priority of Alarm is higher than that of Motion,and the priority of Motion is higher than that of Time.



## Video Playback

**Steps:** right click mouse in main menu→Video playback→choose date,channel,record mode→click search→then can view playback file.(IE browser can't check the playback directly,so you can use the Eseecloud software on computer or check on your phone app Eseecloud and IP RPO)

**Warm prompt:**

1. Illustration for playback button:  play,  pause,  fast forward×2,×4,×8

2. Play file: Choose the recording file in file list, as number "1" shown in picture. Choose one of the recording, click "play" to play to recording file;
3. Video backup: Choose the recording file in file list, as number "1" shown in picture. Insert the U flash disk, click "video backup" to backup the file;
4. Timeline: Click "date" and "time" at left bottom to check the timeline of recording, as number "2" shown in picture;
5. On the timeline with recording file, left click the mouse, then can playback the file.



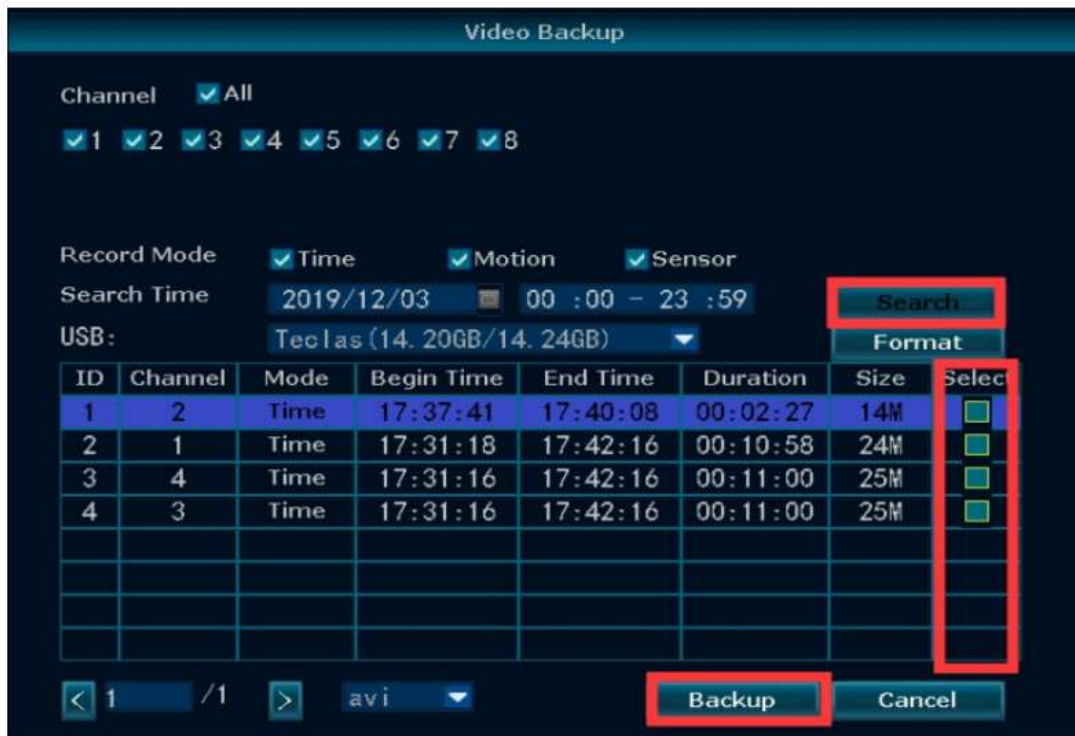
Notes: you can see four channel cameras playback at the same time, if you want to check other channels you need select the correct channel at first, then choose search to find it playback.

## How to Backup the video

Use U disk to copy video, so easy and convenient!

1. 2 USB ports: Plug U flash disk into the USB port of NVR. Right click on main menu → Video backup → choose backup channel → choose video mode → setup searching time → search → choose recording file on the list → video backup (support 32G U flash disk at max. Recording file is packed one hour per time.)
2. 1 USB port: Right click on main menu → video backup → choose backup channel → choose video mode → setup searching time → search → choose recording file on the list → video backup, insert U flash disk within reminding 1 minute, then the system will backup recording file to U flash disk.

The playback files is avi. format, you can use VLC player to check it on your computer VLC player.  
download link: <https://www.videolan.org>



## View on PC via IE or Eseecloud and Phone APP Eseecloud or IP PRO

### To View on the the PC

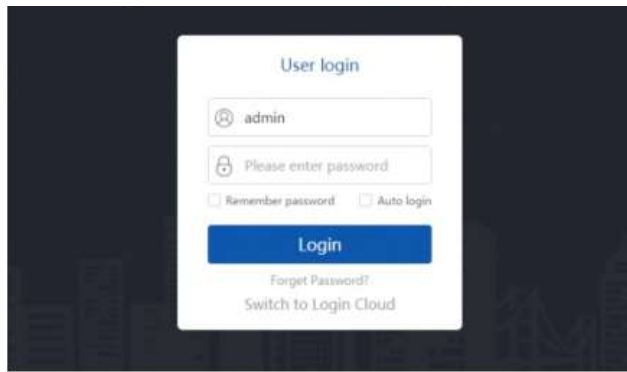
To view on browser,you have to connect the NVR and your computer to the same router.Enter the IP address of NVR on the browser's address bar.(We recommend using IE or Micorosoft Edge) Right click the mouse→system setup→Network Setup→IP address (Start with 192.168... )  
You can change language on the right top corner.



### To view on Eseecloud software on PC

Input Cloud ID (Right click the mouse→fast network→Cloud ID)  
Input User Name and Password (If you doesn't change the user name and password,User Name is admin ,no password)  
please download Eseecloud software from: <https://iproapp.com/computer>  
user name is admin,no password,choose login





\*Select "Add"

\*Select "Cloud ID".enter the cloud ID(9 or 10 numbers).You can find it on your home monitor screen.  
Or right click the mouse, choose Fast network find cloud ID here

\* Username is NVR system user name on your home monitor screen

\* Password is your NVR system password on your home monitor screen.(If you don't change It in your setup,it should be no password)

\* Channels: Input 4 or 6 or 8. If you have 4 cameras,enter 4 etc.

\* Click Confirm and you will see the video.

<input type="radio"/> IP/DDNS	* Cloud ID: 2395644268	Port: 10000
<input checked="" type="radio"/> Cloud ID	User Name: admin	Password:
	Area: center	Device Name:
	Type: NVR	* Number Of Channels: 8
	Channel Serial: 1	Channel Name: ch_1
	Channel Type: Normal	Panorama: Close

if you check in the local network,you can use the NVR IP address to add the system (Find the IP address on Fast network page or Network setting page)

<input checked="" type="radio"/> IP/DDNS	* IP/DDNS: 192.168.1.129	Port: 10000
<input type="radio"/> Cloud ID	User Name: admin	Password:

Area:	center	Device Name:	
Type:	NVR	Number Of Channels:	8
Channel Serial:	1	Channel Name:	ch_1
Channel Type:	Normal	Panorama:	Close

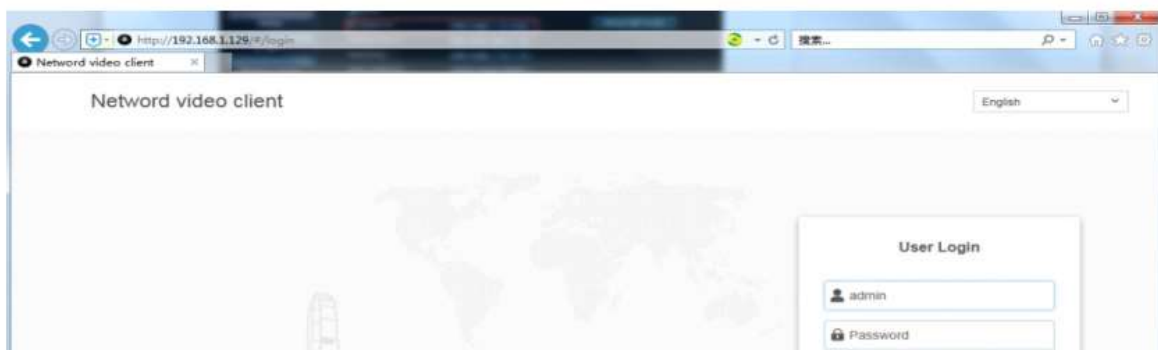
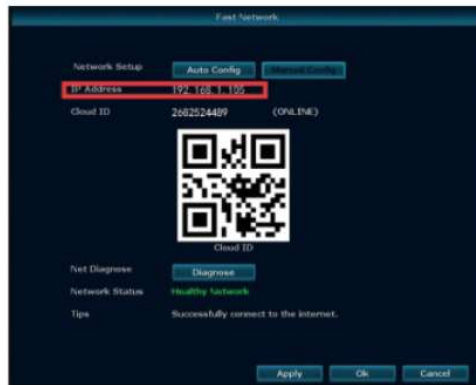
Add Device

IP/DDNS  Cloud ID

*IP/DDNS:	192.168.1.129	Port:	10000
User Name:	admin	Password:	
Area:	center	Device Name:	
Type:	NVR	Number Of Channels:	8
Channel Serial:	1	Channel Name:	ch_1
Channel Type:	Normal	Panorama:	Close

## To View on IE browser

Find the IP address: right click your mouse and choose Fast network, you will see the IP address here.  
 Enter the NVR's IP address in your IE browser for example: <http://192.168.1.105> (If the default WEB port 80 has been changed e.g. to 100, you need to add new port number when input IP address in the browser, for example: <http://192.168.1.105:100>).





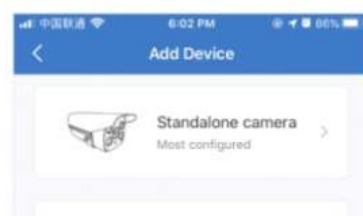
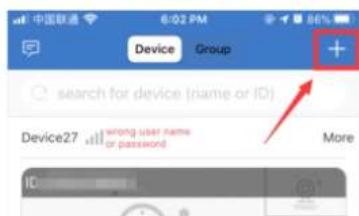
## To view on the Phone

Users can use cellphone to scan the QR code below to install the APP free of charge, or users can search "Eseecloud" or 'IP PRO' on APP store or Google Play then install the APP.

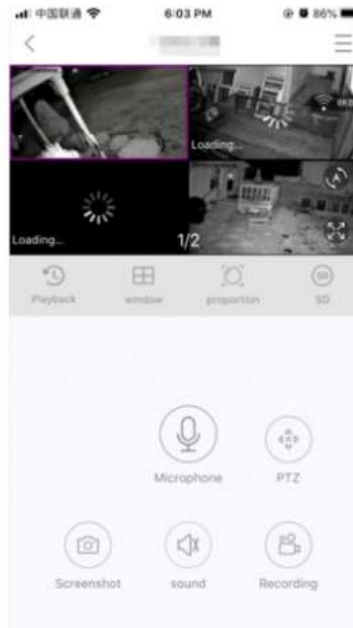
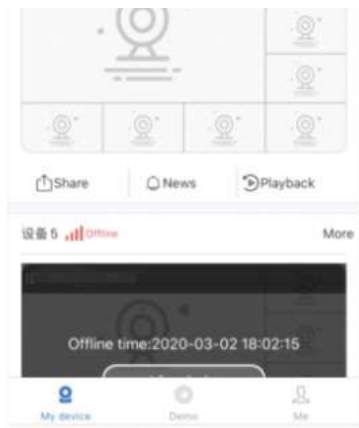


Click "+" → other ways to add / scan the QR code on your fast network page → Network connected device → input Cloud ID and User name and password (user name and password is the same one you login in NVR)

Tips: if you've set a password on your NVR system, please update your password on APP to view. And if your camera loading for a long time and don't show image, you can right click your NVR mouse and choose System Setup → Network setup, change the MTU to 1000.



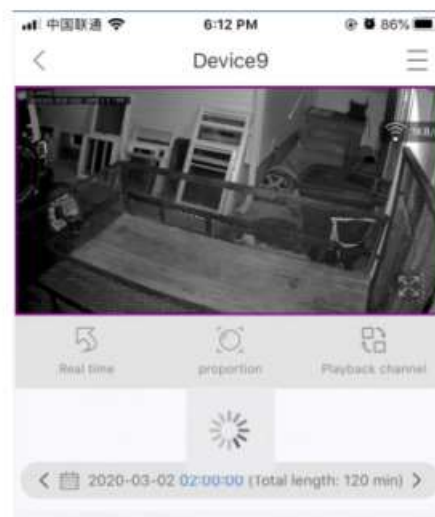


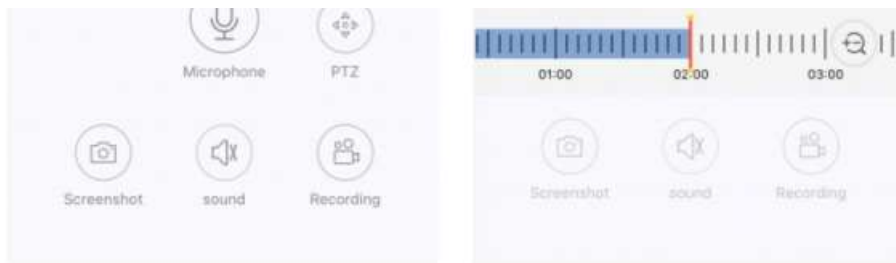


## Playback On Mobiles

In the Eseecloud APP, while viewing live video of the system, click Playback, you will enter the remote playback menu. The APP Playback only check one channel at one time

Tips: Videos in playback are HD mode for real time which requires very good transmission condition. We suggest to playback in LAN. Remote playback out of LAN may not 100% work due to connection & network condition.





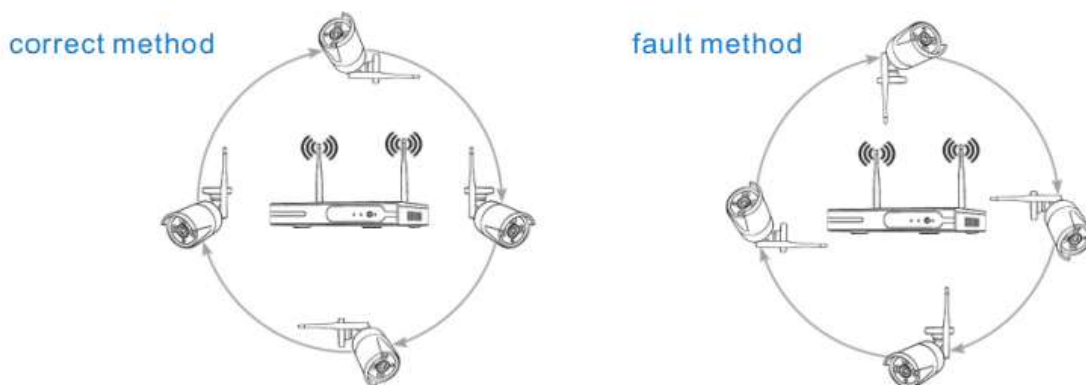
## Extend WIFI Range

Wireless connection is easy and convenient, but it's not universal application. Because of the character of WIFI, the WIFI signal will decrease when going through some obstacles. Some methods can be applied to bypass obstacles and extend WiFi range.

## Position The Antenna Correctly

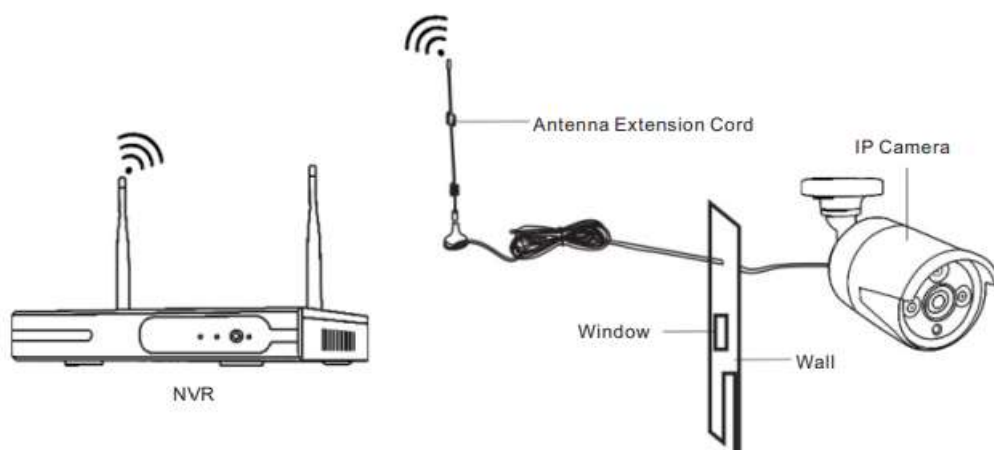
WIFI range is like an apple and the antenna of NVR is in the center of it. WIFI signal is strong all around the WIFI range. Antenna of NVR should be put straight up, if not, WIFI signal will be weak.

According to the signal transmission character of antenna, the antenna of cameras should overlap or parallel to NVR WIFI range, as pictures showed below:



## Use Antenna Extension Cord to prolong WIFI distance

Installation method of antenna extension cord



Note: When WIFI signal is not strong enough against walls users can take off the original antenna and